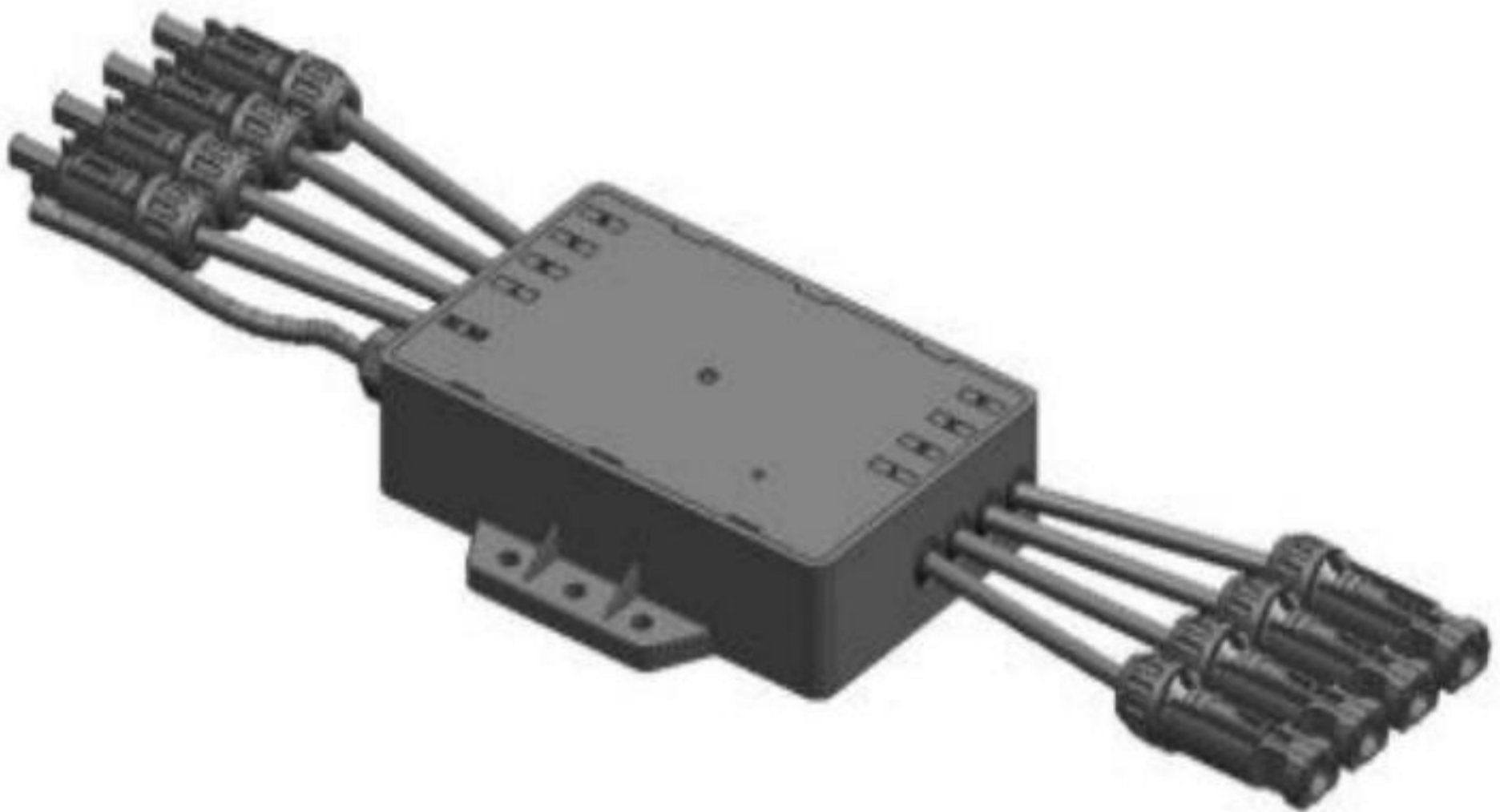
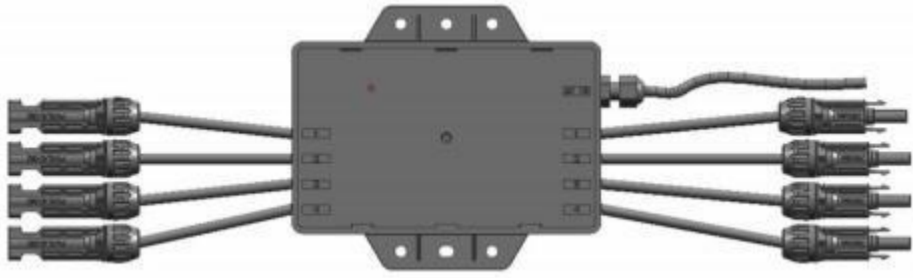


**Foshan Sunpv Technology Co.,Ltd**

**Gateway controller**



## Datasheet



The shutdown controller controls the module-level PV shutdown via a DC power line carrier (PLC) to on or off, enabling module-level shutdown in case of emergency such as fire or installation O&M, the meeting the NEC 2017 690.12 standard, so that PV systems do not have DC voltages above 80 Vdc. Ensure the personal safety of firefighting and on-site operation and maintenance personnel.

Model	Transmitter	Unit
<b>Input/output parameters</b>		
AC input voltage	85~264	Vac
Max system voltage	DC 1500	Vdc
Max current per channel	DC 20	A
<b>Conformity</b>		
Electromagnetic compatibility (EMC)	IEC61000-6-2, IEC61000-6-3, IEC61000-3-11, IEC61000-3-12, FCC Part15 ClassB	/
Safety	IEC-62109-1/2	/
RoHs	Yes	/
<b>Installation specifications</b>		
LxWxH	169X146X35	mm
International Protection	IP67	/
Operating temperature range	-20~ +65	°C
Cooling method	Natural cooling	/
Installation form	Hanging wall/holding column	/

### Product features.

- Power line carrier (PLC) communication, using existing wiring, no additional wiring required.
- High reliability and high interference immunity.
- Meets the NEC 2017 690.12 standard.
- Meets SunSpec standards (optional).
- Easy installation and operation;
- IP67 protection class.